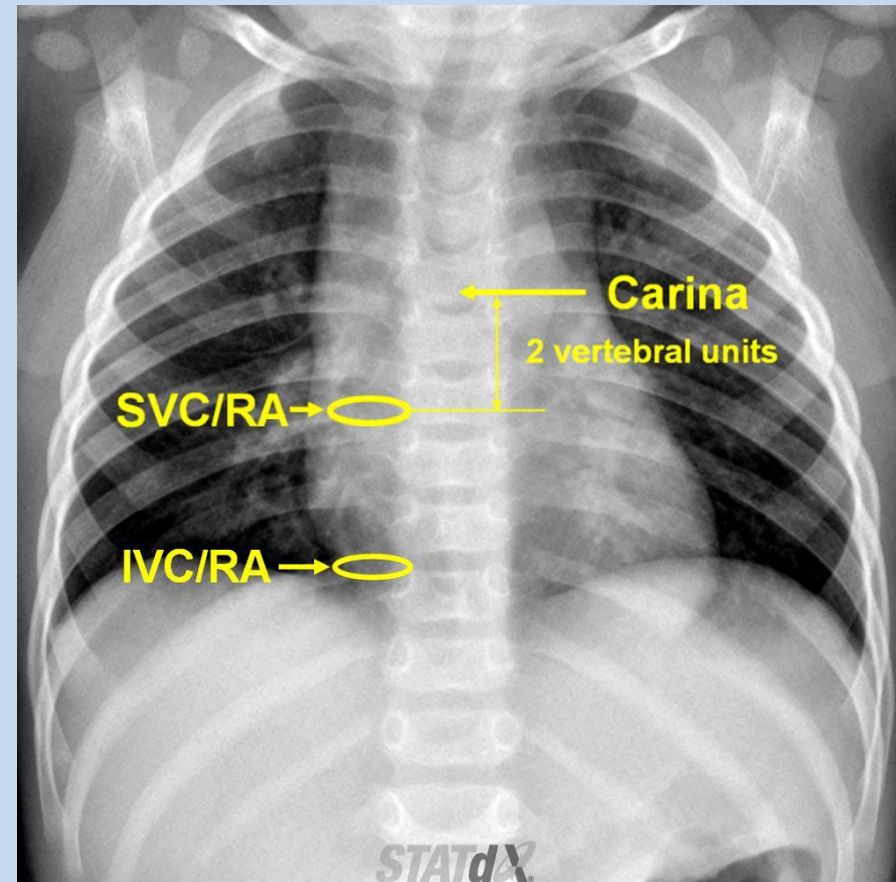


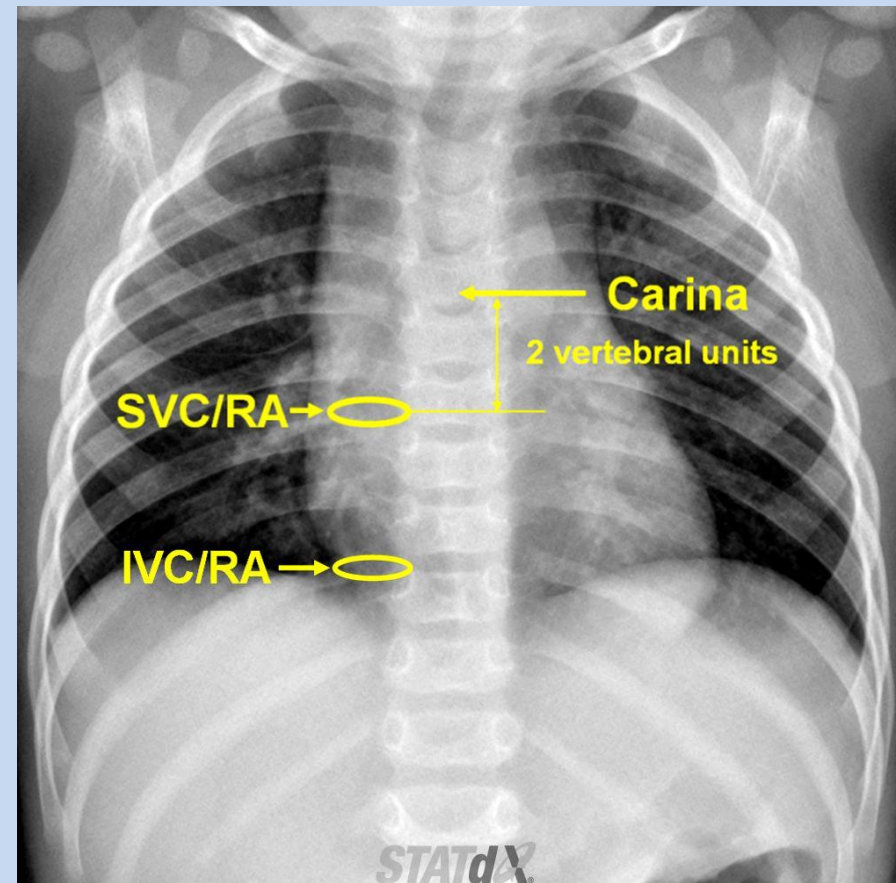
PICC line Upper Extremity

- Tip should be in SVC, above heart
- Ideally within 2 vertebral bodies of carina



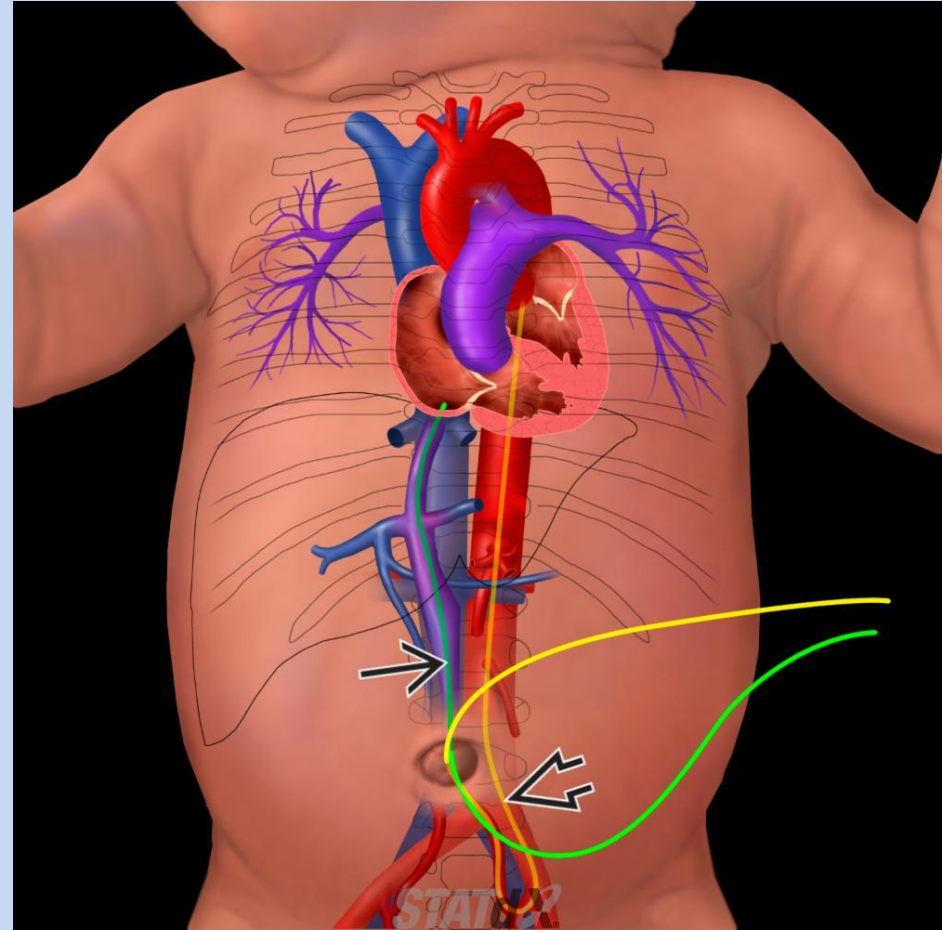
PICC Lower Extremity

- Tip in IVC, below heart
- Ideally over 9th through 12th ribs (above renal veins)



UAC position

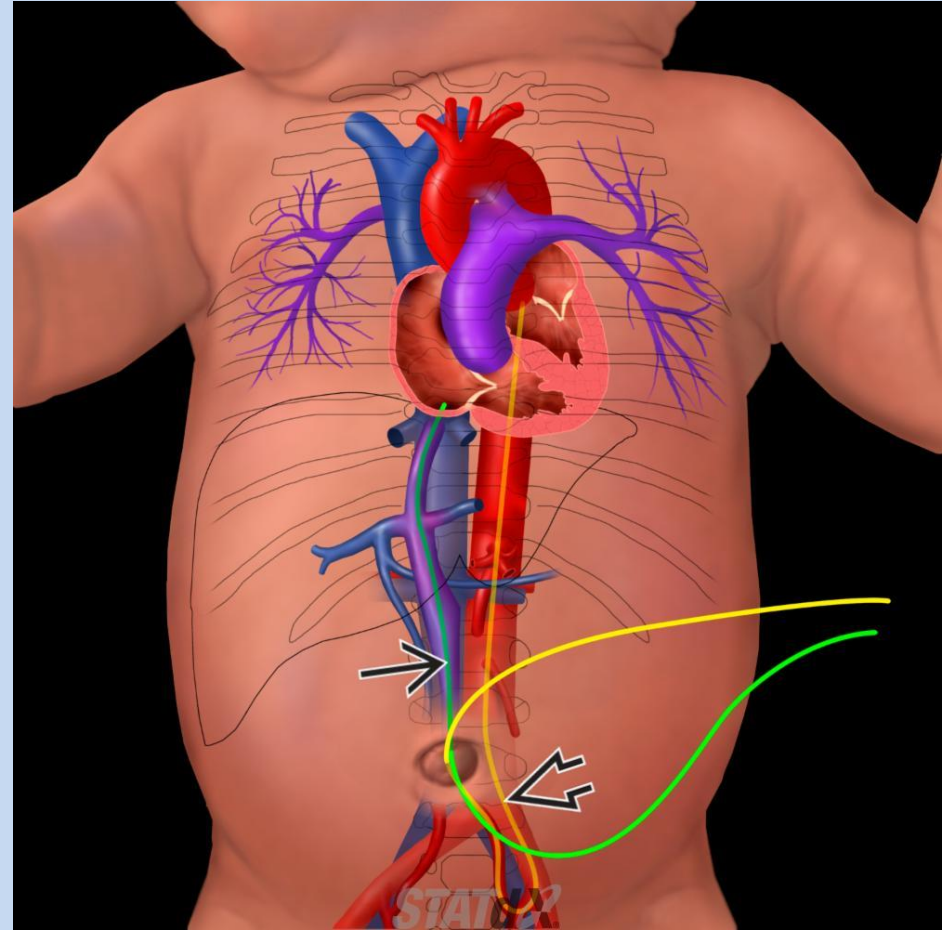
- Verify UAC by seeing inferior loop in pelvis (yellow line)
- Line tip: T6-T9



UVC position

- UVC does not loop into pelvis (green line)
- Tip just above diaphragm

IMPORTANT TO CALL IF TOO LOW
(Risks portal vein thrombosis)



ET tube

- Tip midway between carina and clavicles

NG tube

- Tip in stomach